

Reuse Impact Report

Tracking Your Achievements at Crompton Components Ltd

Your impact from FL-INV-23592



No. of boxes reused

147



Tonnes of cardboard

0.1



Trees saved

0.5



Tonnes of carbon saved

0.1



Tonnes of carbon seq.

0.0



Trees planted

8



Litres of water saved

29,690



KWH of energy saved

2,454

Your impact running total



No. of boxes reused

407



Tonnes of cardboard

0.4



Trees saved

2



Tonnes of carbon saved

0.4



Tonnes of carbon seq.

0.2



Trees planted

25



Litres of water saved

87,523

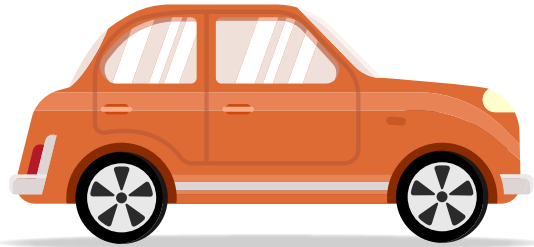


KWH of energy saved

7,650

Savings equivalencies

Your environmental savings achieved to date is equivalent to...



Taking

14

**cars off the road
for one week**



Filling

1,465

**baths with
water**



Powering

35

**homes for
one week**

How your achievements are calculated



Trees saved

The Reuseabox Model saves trees by delaying the recycling process. This allows other companies to reuse rather than purchase new cardboard boxes.

Although most cardboard is made from a percentage of recycled material, the recycling process still

requires a quantity of new pulp which requires trees to be felled.

The figure calculated works on the assumption that new boxes have not been purchased and therefore these trees have been 'saved'. The total trees figure assumes the trees are of a mature size.



Trees planted

As members of 1% for the Planet, 1% of all revenue we make goes to our reforestation charity partners.

[FIND OUT MORE](#)



Water saved

Water has been saved by reusing the cardboard boxes. The recycling process requires a large amount of water in the mulching stage.



Energy saved

The recycling process requires a substantial amount of energy which has been negated by reusing the cardboard boxes.



Carbon saved

The carbon saving has been calculated by examining the emissions produced by the recycling process and the resulting carbon saving. The figure takes into account the travelling involved in the process.



Carbon sequestered

On average a mature tree will absorb 62kg of carbon per year or 0.062 tonnes.

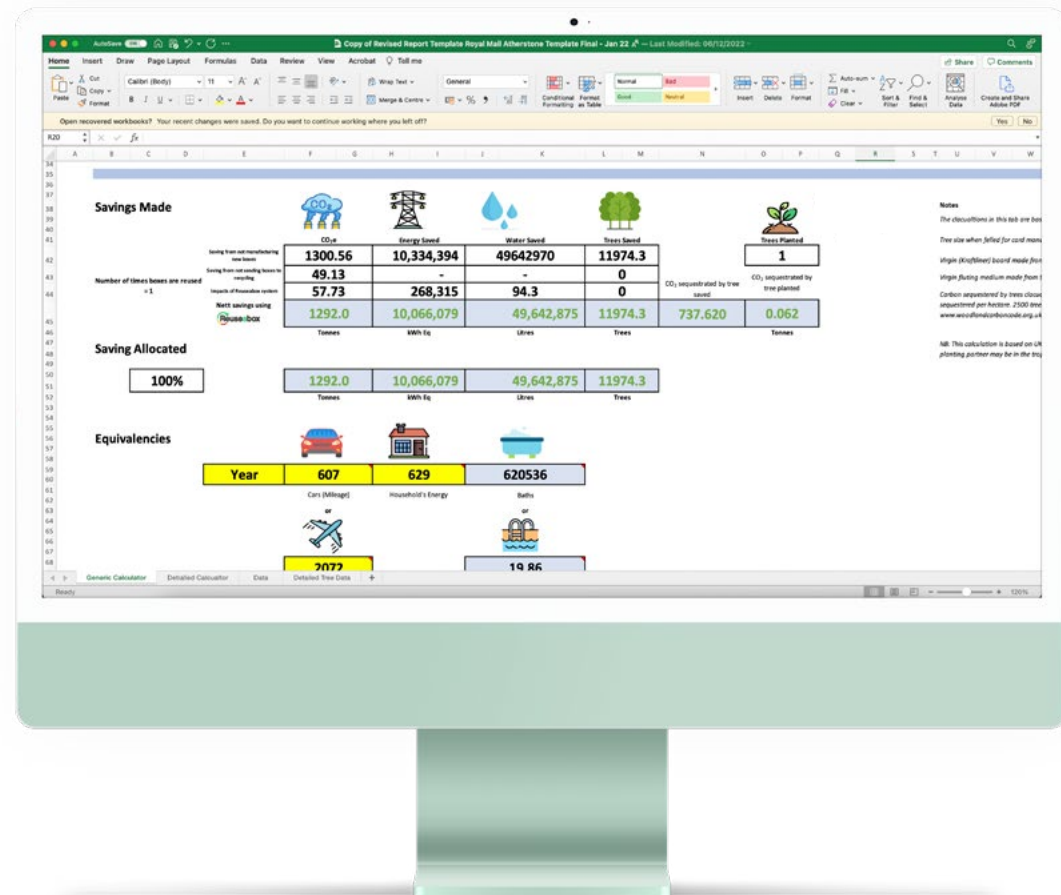
This means we can calculate the amount of carbon that has been sequestered (absorbed) by the trees saved.

Data sources

This report has been created using data generated from the Reusebox Environmental Calculator Tool. The tool was created by consultants at Eco 3 Design and academics at Lincoln University. It has been created in accordance with the GHG Protocol and draws data from a range of reputable, publicly available peer-reviewed sources. A third-party review and assurance of the tool was carried out in January 2024.

Find out more about the Reusebox Environmental Calculator Tool here:

[FIND OUT MORE](#)





Reuseabox

 01636 626476

 www.reuseabox.co.uk

 community@reuseabox.co.uk

